



FINAL PROJECT & PORTFOLIO

FYS100C: Conceptual Architecture

By: Colton Shriner

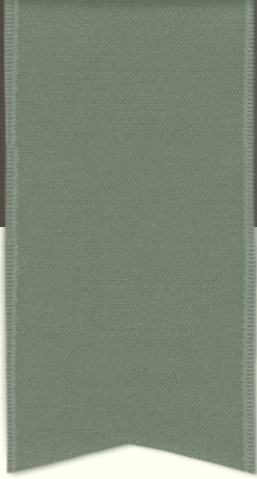


Content Layout

- Inspirations
 - Frank Lloyd Wright
 - Traveling
 - In-Class Models
- Final Project and Model
 - Pictures of Model
 - Drawings



Fig. 1



INSPIRATIONS

- flat roof
- larger chimney
- conforms to land
- shingled side
- banded windows

Traveling



Fig. 3



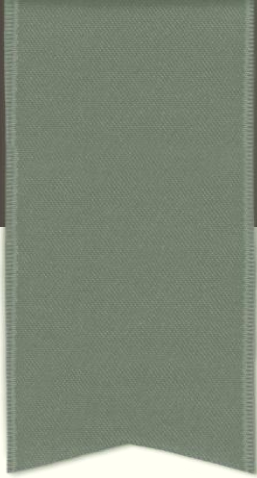
Fig. 4



Fig. 2

In-Class Models





FINAL PROJECT

Design, Drawings, & Model

Final House Project



Final House Project



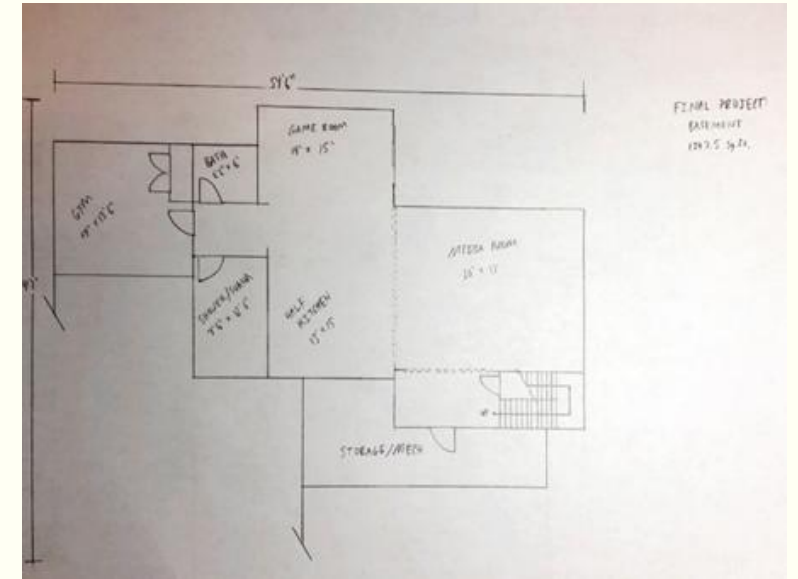
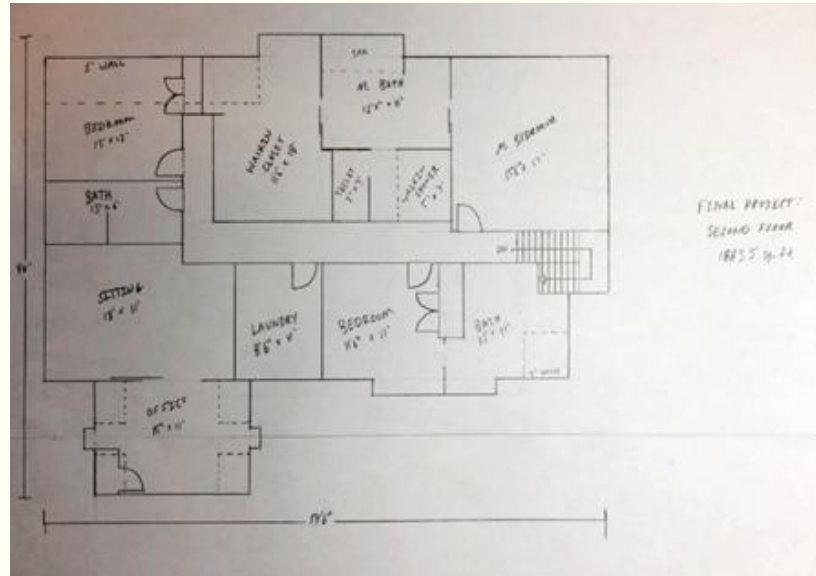
Final House Project



Final House Project

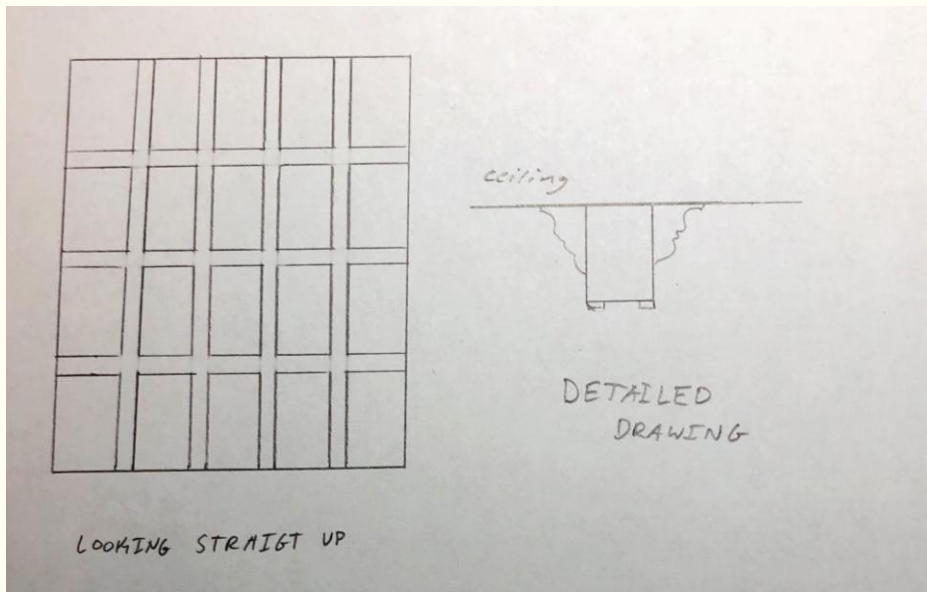


Hand-drawn floor plan of a house with dimensions and room names. The plan includes a Living Room (14' x 15'), Dining Room (14' x 14'), Kitchen (11' x 13'), Great Room (16' x 21'), Study (6' x 12'), Bath (6' x 11'), and a 2-Car Garage (17'0" x 30'4"). A central hallway connects the rooms. A front porch (8' x 14') leads into the house. To the right, a 'FINAL PROJECT' note lists: 'FLOOR PLAN', '2585 sq. ft.', 'GARAGE: 786.75 sq. ft.', and 'LIVING: 1472 sq. ft.'

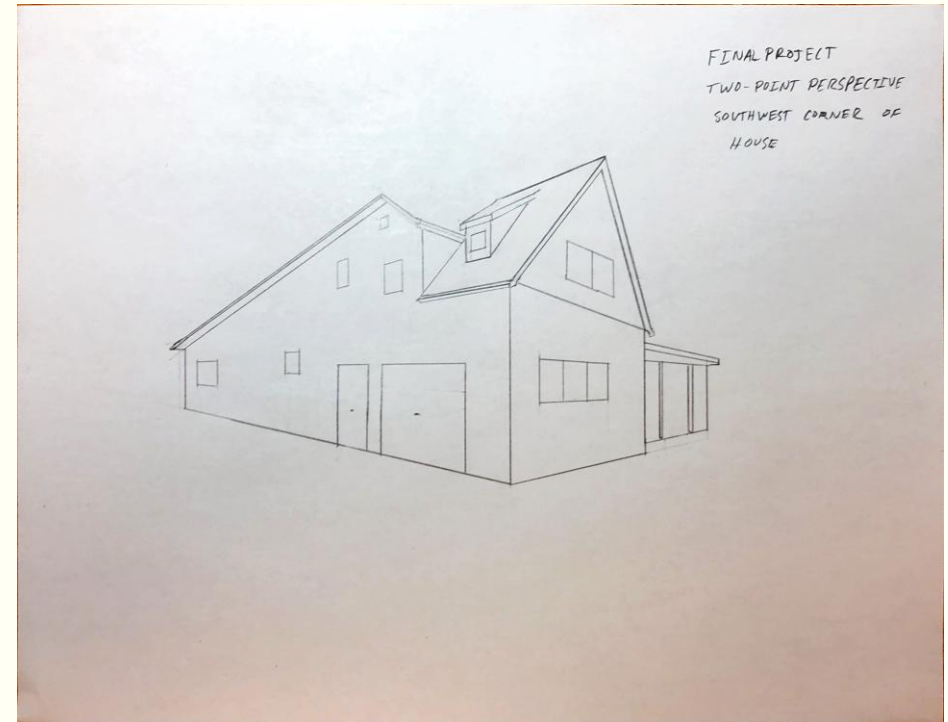


Final House Project

Coffered Ceiling



Two-point Perspective Drawing



References

- Fig. 1 https://www.123rf.com/photo_32335954_word-cloud-of-architecture-in-english-language.html
- Fig. 2 https://en.wikipedia.org/wiki/File:Flag-map_of_Maine.svg
- Fig. 3 https://en.wikipedia.org/wiki/File:Flag-map_of_Mississippi.svg
- Fig. 4 <https://www.madd.org/north-carolina/home/nc-state/>
- Storrer, William, Allin. *The Architecture of Frank Lloyd Wright: A Complete Catalog, Fourth Edition*. The University of Chicago Press, 2017.